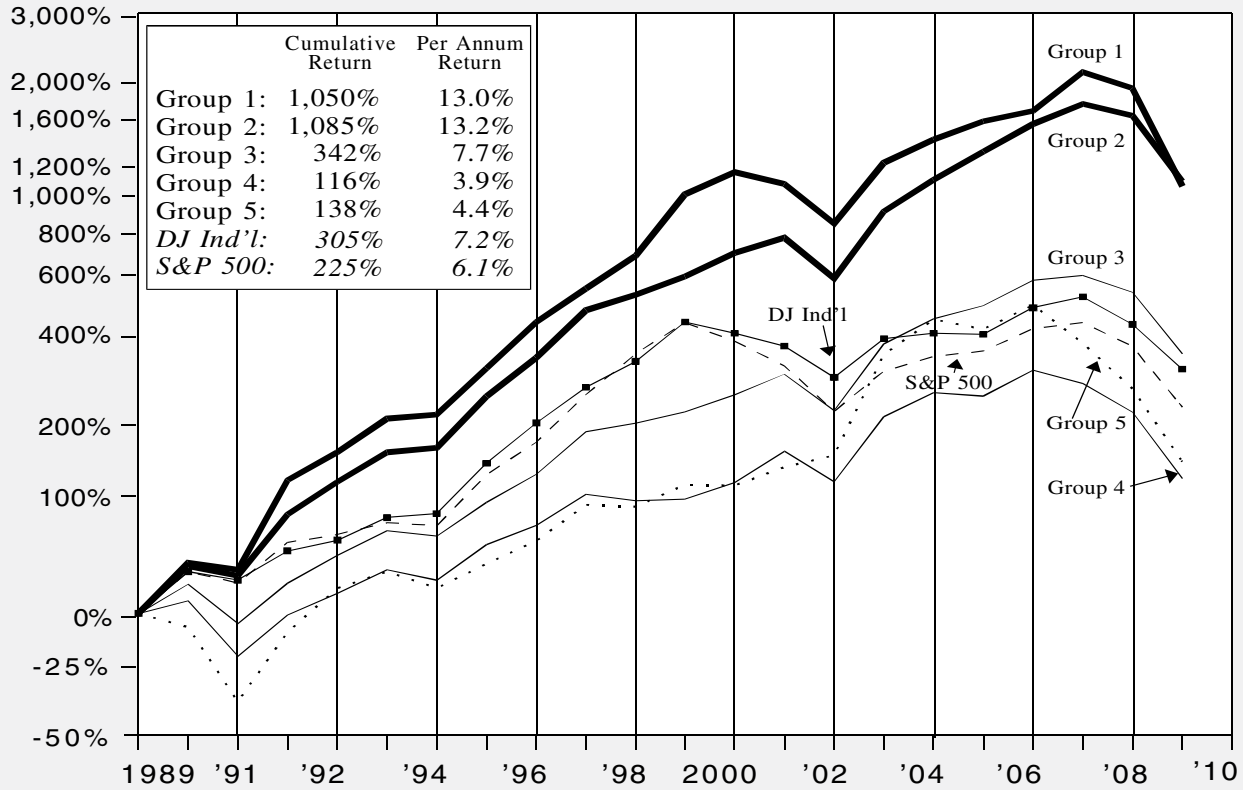


Record of Value Line Ranks for Timeliness Allowing for Changes in Rank Each Week (1989 - 2008)



RECORD OF VALUE LINE RANKINGS FOR TIMELINESS (ALLOWING FOR CHANGES IN RANK EACH WEEK)[†]

December 31, 1988 to December 31, 2008

Group	'89	'90	'91	'92	'93	'94	'95	'96	'97	'98	'99	'00	'01	'02	'03	'04	'05	'06	'07	'08	'89 to '08
1	33.5%	-3.8%	66.7%	17.4%	21.2%	2.3%	30.5%	30.4%	21.1%	20.5%	42.1%	13.5%	-6.5%	-20.2%	41.3%	14.3%	10.9%	6.1%	24.8%	-47.9%	1,050%
2	31.1	-5.2	41.7	20.3	18.6	2.5	34.1	25.1	31.3	9.2	11.0	14.3	9.1	-20.6	46.3	19.9	17.5	17.1	12.2	-35.7	1,085
3	18.2	-20.2	26.1	17.3	15.1	-3.1	21.2	17.4	27.6	5.0	6.6	10.2	12.7	-18.9	46.8	15.4	7.7	15.7	2.8	-36.1	342
4	7.6	-27.2	26.6	13.2	14.5	-5.9	22.5	11.7	19.3	-3.7	1.2	9.7	19.6	-16.0	45.1	14.7	-2.0	16.4	-7.7	-41.9	116
5	-7.5	-34.6	48.6	28.5	10.0	-8.9	14.7	14.0	22.9	-1.1	13.3	-0.4	11.1	+7.0	78.3	23.4	-5.5	14.8	-19.6	-49.2	138
DJIA	27.0	-4.3	20.3	4.2	13.7	2.1	33.5	26.0	22.6	16.1	25.2	-6.2	-7.1	-16.8	25.3	3.1	-0.6	16.3	6.4	-33.8	305
S&P 500	27.3	-6.6	26.3	4.5	7.1	-1.5	34.1	20.3	31.0	26.7	19.5	-10.1	-13.0	-23.4	26.4	9.0	3.0	13.6	3.5	-38.5	225

[†] Arithmetic Averaging