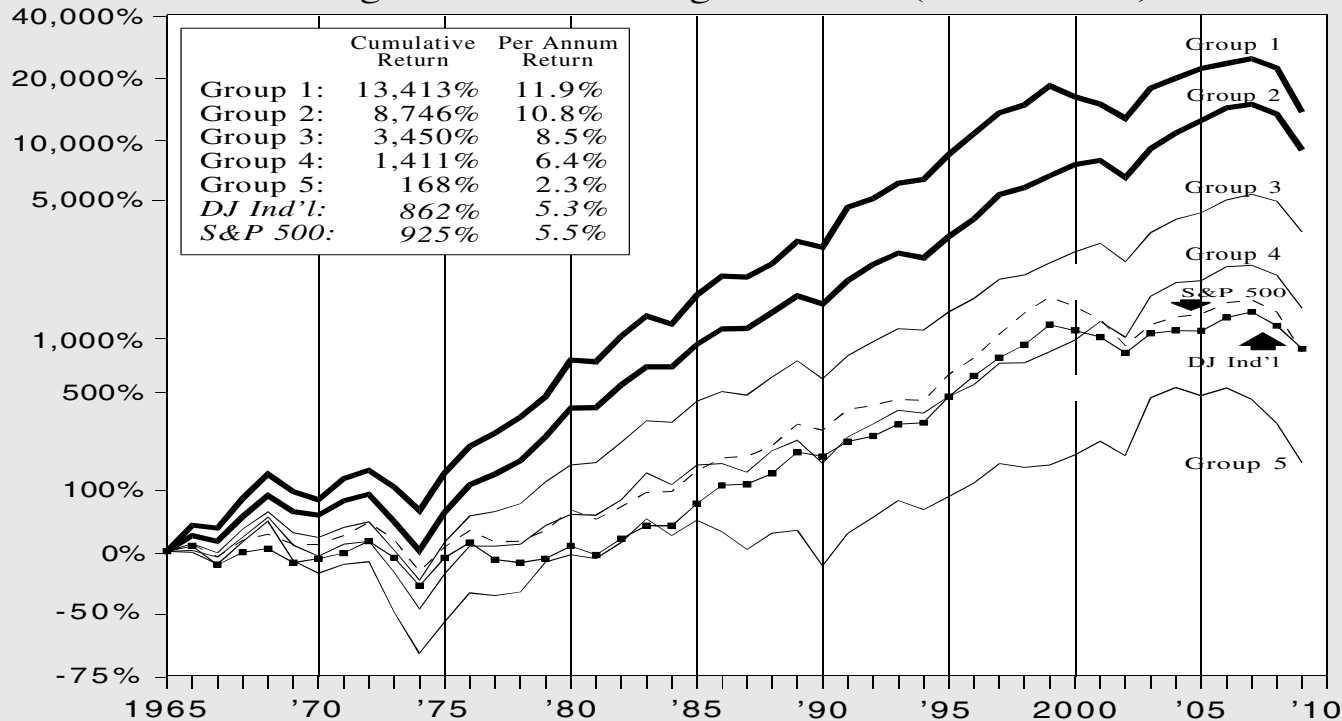


Record of Value Line Ranks for Timeliness

Allowing for Annual Changes in Rank (1965 - 2008)



RECORD OF VALUE LINE RANKINGS FOR TIMELINESS (WITHOUT ALLOWING FOR CHANGES IN RANK EACH WEEK)†

April 16, 1965 to December 31, 2008

Group	'65*	'66	'67	'68	'69	'70	'71	'72	'73	'74	'75	'76	'77	'78	'79	'80	'81	'82	'83	'84
1	33.6%	-3.1%	39.2%	31.2%	-17.7%	-8.9%	26.5%	10.1%	-17.1%	-23.1%	51.6%	35.3%	15.8%	19.8%	25.6%	50.2%	-1.9%	33.7%	25.2%	-8.6%
2	18.9	-6.0	31.9	26.3	-16.3	-4.0	17.4	7.5	-26.2	-27.8	53.0	36.3	12.7	16.1	30.8	37.4	0.7	29.0	22.2	-0.1
3	8.9	-9.7	30.1	21.4	-20.7	-5.5	12.2	6.2	-27.0	-28.5	52.9	33.8	5.2	9.2	27.6	20.8	2.7	25.5	26.7	-1.6
4	0.8	-7.2	25.1	25.1	-26.8	-11.7	14.2	3.2	-29.1	-33.6	48.4	36.1	-0.2	2.4	23.1	13.2	-0.9	18.1	35.2	-12.3
5	-1.2	-12.4	28.4	25.9	-35.7	-13.1	10.5	2.9	-43.1	-36.8	42.1	38.2	-2.8	4.0	39.9	8.4	-4.2	19.9	30.0	-17.1
Avg.	10.1	-7.9	29.9	24.6	-22.1	-7.5	14.9	5.5	-27.7	-29.6	51.2	35.1	5.8	9.6	28.0	23.4	0.9	25.0	27.5	-4.7
Group	'85	'86	'87	'88	'89	'90	'91	'92	'93	'94	'95	'96	'97	'98	'99	'00	'01	'02	'03	'04
1	38.6%	23.5%	-1.2%	16.0%	28.7%	-6.6%	56.7%	10.1%	18.5%	4.6%	31.3%	27.0%	25.8%	9.3%	23.7%	-11.7%	-7.4%	-15.0%	40.1%	12.2%
2	29.5	18.7	0.4	19.7	20.3	-8.7	29.8	19.9	13.6	-5.3	27.1	21.4	31.3	8.5	13.9	13.2	4.8	-17.3	37.9	18.8
3	26.6	11.5	-4.1	23.2	19.6	-18.6	30.0	17.5	15.3	-1.6	22.8	16.1	24.1	4.8	14.5	13.0	10.2	-18.8	38.6	15.8
4	24.6	1.5	-9.1	27.2	12.4	-22.8	34.1	15.6	16.5	-2.9	20.2	14.3	26.6	0.6	13.5	14.0	23.3	-16.2	58.2	16.5
5	18.7	-12.1	-17.9	20.0	3.3	-33.0	43.8	19.9	20.3	-9.3	15.7	15.8	24.4	-4.0	2.8	11.6	16.4	-14.5	90.1	12.3
Avg.	27.0	10.2	-4.9	22.6	17.8	-17.6	33.4	17.3	15.7	-2.6	23.2	17.4	26.1	4.4	14.0	11.4	11.0	-17.5	45.4	16.0
Group	'05	'06	'07	'08	'65* to 2008															
1	11.3	5.7%	5.4%	-45.0%	13,413%															
2	15.0	15.6	3.9	-40.1	8,746%															
3	7.8	15.2	6.4	-34.2	3,450%															
4	2.4	16.7	1.4	-38.2	1,411%															
5	-8.7	9.1	-12.0	-50.9	168%															
Avg.	7.3	14.6	3.7	-38.0	3,351%															
						* April through December														
						† Arithmetic Averaging														
						Dow Jones Industrials 862%														
						S&P 500 925%														